

# NJSLA - Science

## Student Achievement Report

### Spring 2019

### Tinton Falls School District



# Assessment Background

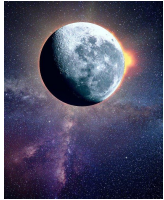
- Spring 2017 and prior - NJ ASK
- Spring 2018 - NJSLA Field Test
- Spring 2019 - NJSLA baseline scores released

# New Jersey Student Learning Assessment (NJSLA) Science

- Federally required state assessment administered to students in grades 5, 8, and 11
- Provides a snapshot of student performance on the New Jersey Student Learning Standards for Science (NJSLS -Science)
- Significantly different from the New Jersey Assessment of Skills and Knowledge (NJ ASK) due to more rigorous standards
- Focuses on the application of science knowledge and skills rather than memorization of content.

# Domains and Practices

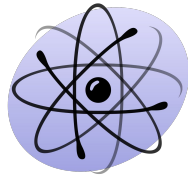
**Earth and  
Space  
Sciences**



**Life  
Sciences**



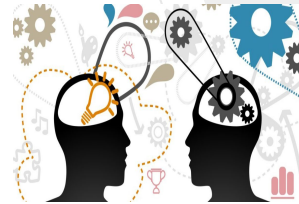
**Physical  
Sciences**



**Investigating  
Practices**



**Sensemaking  
Practices**



**Critiquing  
Practices**



# NJSLA- Science Performance Level Descriptors

**Level 1** performance demonstrates minimal understanding of the NJSLS-Science

**Level 2** performance demonstrates a limited grade level understanding of the NJSLS-Science

**Level 3** performance demonstrates appropriate grade-level understanding of the NJSLS-Science

**Level 4** performance demonstrates advanced understanding of the NJSLS-Science

# Proficiency Levels by Grade and Mastery Cut Scores

Grade	Level 1	Level 2	Level 3	Level 4
5	100-149	150-199	200-242	243-300
8	100-149	150-199	200-230	231-300

Student performing at Level 3 and Level 4 are considered proficient and above.

# Number of Students Assessed in Spring 2019

## NJSLA - Science

<b>Grade</b>	<b>Number of Students Assessed in 2019</b>
<b>5</b>	<b>151</b>
<b>8</b>	<b>159</b>
<b>TOTAL</b>	<b>310</b>

# Comparison of District to State Percentage Averages

Grade	Level 1 District	Level 1 State	Level 2 District	Level 2 State	Level 3 District	Level 3 State	Level 4 District	Level 4 State	Level 3 & 4 District	Level 3 & 4 State
5	19	34.8	35.4	36.0	37.4	22.7	8.2	6.6	45.6	29.2
8	22.5	35.7	47	44.5	23.8	15.3	6.6	4.5	30.5	19.8



# Science Grade 5

## Grade Level Outcomes & Proficiency Comparisons

	Level 1	Level 2	Level 3	Level 4	% of students at Level 3 & 4
<b>Tinton Falls</b>	19	35.4	37.4	8.2	45.6
Wall					44.3
Holmdel					58.9
Matawan					38.1
Ocean					38.5
NJ					29.2

# Science Grade 8

## Grade Level Outcomes & Proficiency Comparisons

	Level 1	Level 2	Level 3	Level 4	% of students at Level 3 & 4
<b>Tinton Falls</b>	22.5	47	23.8	6.6	30.5
Wall					20.5
Holmdel					39.7
Matawan					23.3
Ocean					19.8
NJ					19.8

## Grade 5 - Disaggregated Data

c	# of valid scores	Average Scale Score	Level 1	Level 2	Level 3	Level 4	Passing Score Level 3 and 4
<b>State</b>	<b>101,220</b>	<b>170</b>	<b>34.8%</b>	<b>36%</b>	<b>22.7%</b>	<b>6.6%</b>	<b>29.3%</b>
<b>District</b>	<b>151</b>	<b>185</b>	<b>19% (28)</b>	<b>35.4% (52)</b>	<b>37.4% (55)</b>	<b>8.2% (12)</b>	<b>45.6%</b>
Female	83	184	17.1%(14)	35.4% (29)	42.7% (35)	4.9% (4)	47.6%
Male	68	148	21.5%(14)	35.4% (23)	30.8% (20)	12.3% (8)	43.1%
Hispanic	14	148	57.1% (8)	28.6% (4)	14.3% (2)	0% (0)	14.3%
Asian	14	215	0%(0)	21.4%(3)	57.1%(8)	21.4%(3)	78.6%
Black	24	161	37.5%(9)	41.7%(10)	20.8%(5)	0%(0)	20.8%
White	97	192	11.8% 11)	36.6% (34)	41.9% (39)	9.7% (9)	51.6%
2 or more races	<10						
ED-Yes	20	148	55.6%(10)	33.3% (6)	11.1% (2)	0% (0)	11.1%
SE-Yes	22	140	59.1% 13)	27.3% (6)	13.6% (3)	0% (0)	13.6%
504-Yes	10	194	10% (1)	30% (3)	60% (6)	0% (0)	60%
ELL	<10						<b>11</b>

## Grade 8 - Disaggregated Data

	# of valid scores	Average Scale Score	Level 1	Level 2	Level 3	Level 4	Passing Score Level 3 and 4
<b>State</b>	<b>102,040</b>	<b>165</b>	35.7%	44.5%	15.3%	4.5%	19.8%
<b>District</b>	159	177	22.5%(34)	47%(71))	23.8%(36)	6.6%(10)	30.5%(46)
Female	82	176	22.1% (17)	50.6%(39)	22.1%(17)	5.2%(4)	27.3%(21)
Male	77	178	23%(17)	43.2%(32)	25.7%(19)	8.1%(6)	33.8%(25)
Hispanic	24	167	29.2%(7)	50%(12)	16.7%(4)	4.2%(1)	20.8%(5)
Asian	<10		0%	0%	0%	0%	0%
Black	20	147	42.1%(8)	52.6%(10)	0%	5.3%(1)	5.3%(1)
White	97	182	17.4%(16)	48.9%(45)%	28%(26)	5.4%(5)	33.7%(31)
2 or more races	12	199	20%(2)	20%(2)	40%(4)	20%(2)	60%(6)
ED-Yes	29	153	50%(14)	32.1%(9)	14.3%(4)	3.6%(1)	17.9%(5)
SE-Yes	26	136	72%(18)	24%(6)	4%(1)	0%	4%(1)
504-Yes	<10	218	0%	50%(2)	0%	50%(2)	50%(2)
ELL	<10		0%	0%	0%	0%	0%



# Targeted Interventions

Elementary

# Elementary Grades

Carolina Science program implemented in 17-18 SY. Curriculum revised to align to standards and resources.

Teachers will analyze the Practices for NGSS at each grade level during Data Chats with the building supervisor/stem coach using [Appendix F](#) in the NGSS.

Teachers will analyze the [Science Practices Continuum](#) rubrics in order to begin to design instruction and assessments that incorporate these practices into each domain.

Teachers will analyze the [NJSLA-S](#) including key concepts, skills and practices for each question as well as grade specific standards that are used in those questions. Teachers will use this information to plan appropriate instruction and assessment.



# Targeted Interventions

6-8th Grade

# Middle School

All students in grades 6-8 access to online resources, including HMH Resources and Achieve 3000. These online programs integrate differentiated practice into classroom lessons and independent learning.

Teachers will participate in professional development to review and analyze NJSLA results. Articulation time to develop additional instructional strategies to improve student achievement, and review the School Evidence Statement Analysis in order to identify specific standards to align interventions to in the classroom.

NJSLA Science assessment analysis will be conducted during the school year to evaluate the effectiveness of changes to instruction and assessments with supervisor/Principal/stem coach in Data Chats.

Curriculum being revised in Summer 2020-2021 to address curricular gaps.



# Resources to Support Improved Student Achievement

The NJDOE Office of Standards has a repository of various resources to help support educators and districts with the implementation of the NJSLS-Science:  
<https://www.nj.gov/education/aps/cccs/science/mc.htm>

NJSLA-Science practice tests are also available online at the following site:  
<https://measinc-nj-science.com/>

The NJDOE plans to continue to develop additional resources, such as K-12 instructional units based on the 2020 NJSLS-Science and connect educators with free resources and course materials.

Any  
questions ?

